

<b>HIGHWAY INCIDENT SAFETY</b>	<b>ATHENS-CLARKE COUNTY  FIRE AND EMERGENCY SERVICES  DEPARTMENT  STANDARD OPERATING PROCEDURES  VOLUME 1</b>
	<b>105.15</b>
	<b>PAGE 1 OF 8</b>

**PURPOSE:**

This procedure identifies safety practices for Athens-Clarke County Fire and Emergency Services Department personnel and will provide maximum protection and safety for personnel operating in or near moving vehicle traffic. It also identifies several approaches for individual practices to keep firefighters safe while exposed to traffic.

IT SHALL BE THE POLICY OF THE ATHENS-CLARKE COUNTY FIRE AND EMERGENCY SERVICES DEPARTMENT TO POSITION APPARATUS AT THE SCENE OF EMERGENCIES IN A MANNER THAT BEST PROTECTS THE WORK AREA AND PERSONNEL FROM VEHICLE TRAFFIC AND OTHER HAZARDS.

All personnel should understand the high risk that firefighters are exposed to when operating in or near moving vehicle traffic. Many motorists have impaired vision, are impaired by alcohol or drugs or have other conditions that should keep our awareness high. Nighttime operations are particularly hazardous.

**SAFETY MEASURES:**

1. Never trust the traffic.
2. Engage in proper protective apparatus placement.
3. Wear high visibility reflective vests.
4. Reduce motorist vision impairment.
5. Utilize traffic cones.

Listed below are the benchmarks for safe performance when operating in or near moving vehicle traffic.

1. Always maintain an awareness of the high risk of working in or around moving traffic.  
Never trust moving traffic. Always look before you step! Always keep an eye on the traffic.

**HIGHWAY INCIDENT SAFETY****ATHENS-CLARKE COUNTY  
FIRE AND EMERGENCY SERVICES  
DEPARTMENT  
STANDARD OPERATING PROCEDURES  
VOLUME 1****105.15****PAGE 2 OF 8**

2. Always position apparatus to protect the scene, patients, and emergency personnel. When possible, angle apparatus at 45 degrees away from the roadside. This will direct motorists around the scene (See Figure 1). Apparatus positioning must allow for adequate parking space for other fire apparatus and a safe work area for emergency personnel. Always allow enough distance to prevent a moving vehicle from knocking fire apparatus into the work area.
3. At intersections, or where the incident may be near the middle of the street, two or more sides of the incident may need to be protected. Block all exposed sides. Where apparatus is in limited numbers, prioritize the blocking from the most critical to the least critical (See Figures 2, 3 and 4). If there is need, stop all traffic flow preferably utilizing law enforcement.
4. For first arriving engine companies where a charged hand line may be needed, angle the engine so that the pump is on the opposite side of on-coming traffic to protect the pump operator.
5. The initial company officer (or command) must assess the parking need of later arriving apparatus and specifically direct the parking and placement of these vehicles as they arrive to provide protective blocking of the scene.
6. For NIGHTTIME operations, turn OFF fire apparatus headlights. This will help to reduce the blinding effect to approaching traffic.
7. Crews should exit the curbside of non-traffic side of the vehicle whenever possible.
8. Always look before exiting vehicle, or into traffic areas. When walking around fire apparatus parked adjacent to moving traffic, keep an eye on traffic and walk as close to fire apparatus as possible.
9. Safety vests are to be worn on all highway incidents operating in or near traffic.
10. When possible place traffic cones at the scene to direct traffic. This should be initiated by the first arriving company and expanded as needed when others arrive on scene. It is vital to establish a safe work area for crews to move about the scene as safe as possible. Always place and retrieve cones while facing on-coming traffic.

**HIGHWAY INCIDENT SAFETY**

**ATHENS-CLARKE COUNTY  
FIRE AND EMERGENCY SERVICES  
DEPARTMENT  
STANDARD OPERATING PROCEDURES  
VOLUME 1  
105.15  
PAGE 3 OF 8**

11. Keep in mind that one of the main responsibilities of law enforcement at an accident scene is to conduct accident investigations and to get or keep traffic moving within a reasonable amount of time. The Incident Commander must coordinate all efforts to ensure both scene safety and traffic flow at any given incident.

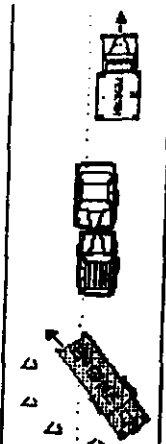
**GEORGIA HIGHWAY 10 LOOP and MAJOR FOUR LANES**

1. For incidents on Georgia Highway 10 Loop, request law enforcement to block traffic so a safe work area can be established. On other major four lanes officers should request additional law enforcement units for blocking.
2. The initial company officer, or command, must thoroughly assess the need for apparatus on the scene and their specific positions. Companies should be directed to specific parking locations to protect the work area, emergency personnel, and patients.
3. On extended accident scenes, traffic cones should be placed as needed to allow adequate warning to drivers. These types of incidents are best managed by the Department of Transportation (DOT) or Police Department.
4. The termination of the incident must be managed with the same aggressiveness as initial actions. Crews, apparatus and equipment must be removed from the highway promptly to reduce exposure to moving traffic.

**HIGHWAY INCIDENT SAFETY**

**ATHENS-CLARKE COUNTY  
FIRE AND EMERGENCY SERVICES  
DEPARTMENT  
STANDARD OPERATING PROCEDURES  
VOLUME 1  
105.15  
PAGE 4 OF 8**

Figure #1



Where possible, angle apparatus at a 45 degree angle from the curb.

Figure #3

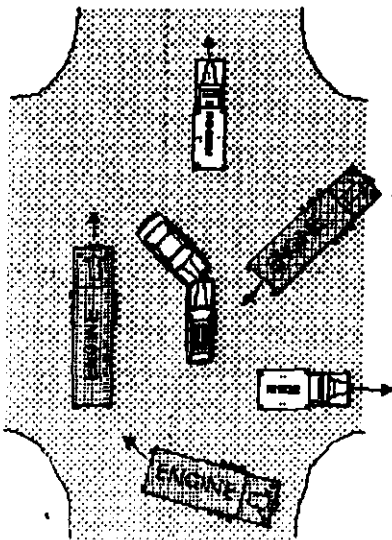


Figure #2

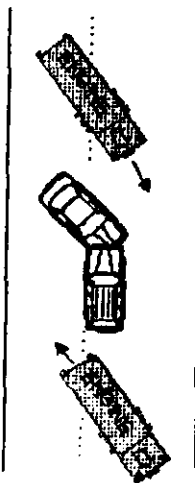
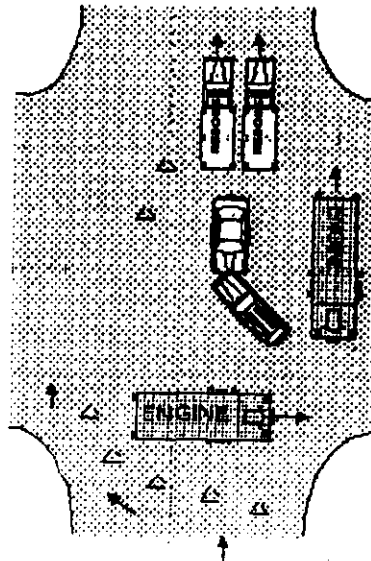


Figure #4

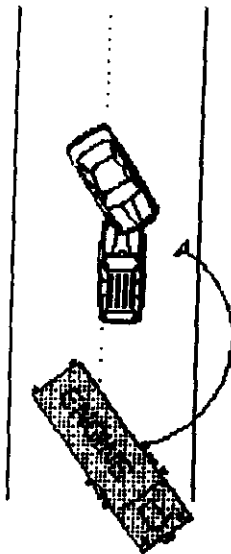


Often times two or more sides may need to be protected. Prioritize placement of the apparatus by blocking from the most critical to the least critical side

**HIGHWAY INCIDENT SAFETY**

**ATHENS-CLARKE COUNTY  
FIRE AND EMERGENCY SERVICES  
DEPARTMENT  
STANDARD OPERATING PROCEDURES  
VOLUME 1  
105.15  
PAGE 5 OF 8**

Figure #5



To protect pump operator, position apparatus with the pump panel on the opposite side of on-coming traffic.

Figure #6

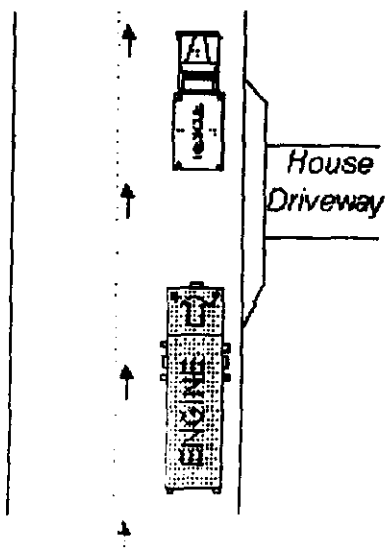
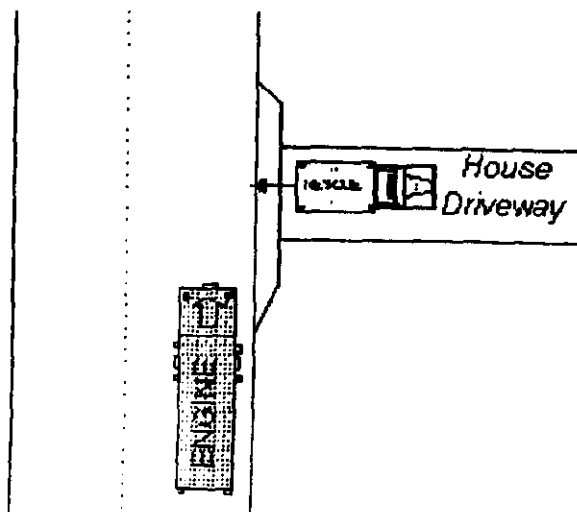


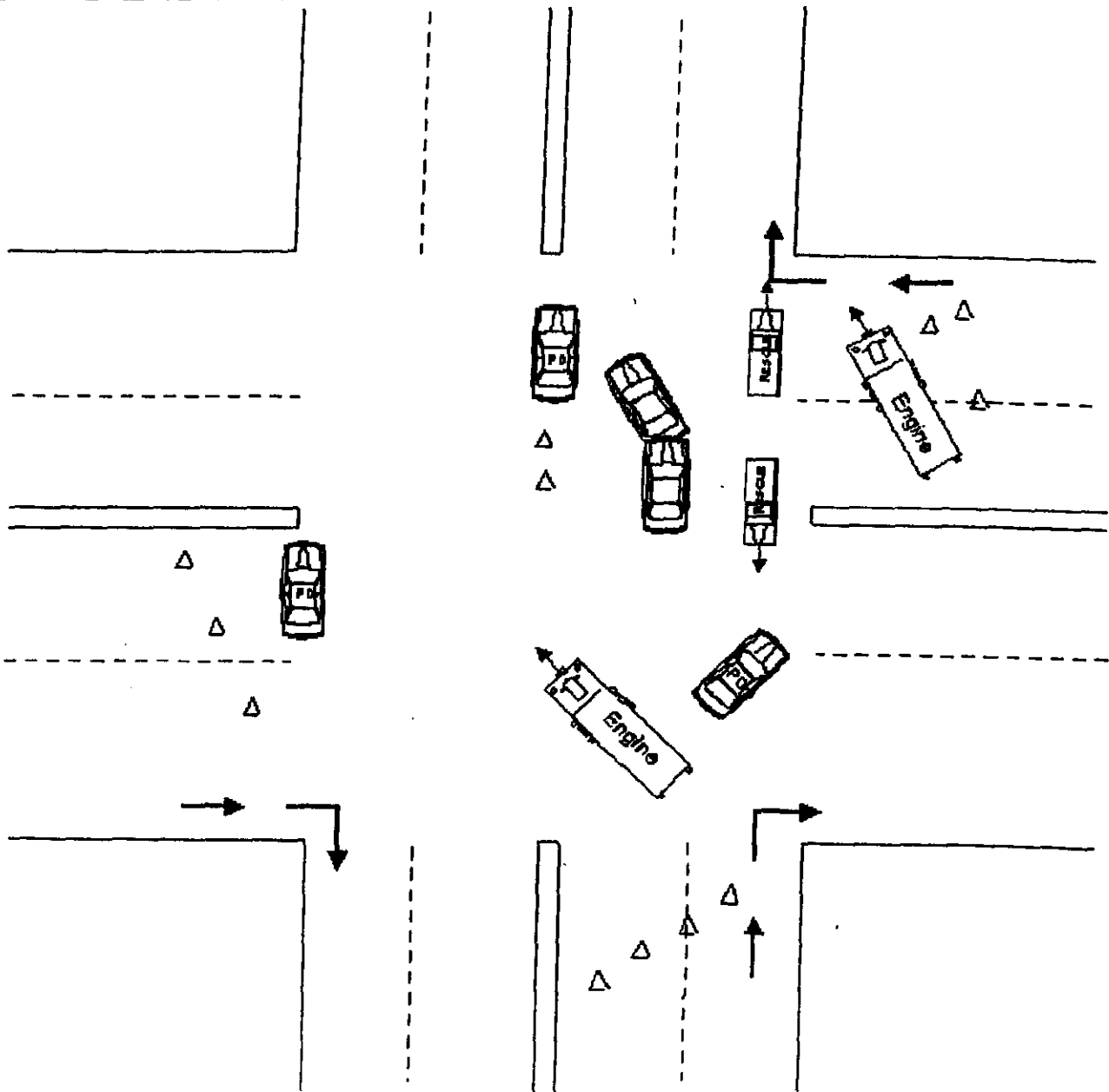
Figure #7



Where possible, park rescues in driveways or position rescue to protect patient loading area.

**HIGHWAY INCIDENT SAFETY**

**ATHENS-CLARKE COUNTY  
FIRE AND EMERGENCY SERVICES  
DEPARTMENT  
STANDARD OPERATING PROCEDURES  
VOLUME 1  
105.15  
PAGE 6 OF 8**



Provide specific direction to police as to what traffic control needs you have. Position rescues to protect patient loading areas.

Figure 18

<b>HIGHWAY INCIDENT SAFETY</b>	<b>ATHENS-CLARKE COUNTY FIRE AND EMERGENCY SERVICES DEPARTMENT STANDARD OPERATING PROCEDURES VOLUME 1</b> <b>105.15</b> <b>PAGE 7 OF 8</b>
--------------------------------	--

**REQUIRED USE OF TRAFFIC SAFETY VESTS:**

This following procedures identifies the use of high visibility safety vests for Athens-Clarke County Fire and Emergency Services personnel in compliance with federal regulation 23CFR634 effective November 24, 2008.

The federal regulation mandates that anyone working an incident on the right of way of any highway must wear high visibility clothing that meets the standards of ANSI/ISEA 107: 2004-2007. Athens-Clarke County Fire and Emergency Services will comply with this federal regulation.

**TRAFFIC VESTS: INCIDENT USE**

- A. Traffic safety vests shall be worn by all fire personnel working a highway/street/parking deck/parking lot/airport incident. There are two exceptions when vests will not be worn:
  - 1. Firefighting.
  - 2. Operating extrication tools. However, once extrication is complete then personnel using the tools will wear vests.
- B. Vests will be worn by fire apparatus drivers at an incident except when assigned to RIT and staged in full turn-out gear with his/her crew on the fireground.
- C. Chief Officers or an Incident Commander may require fire personnel to wear vests at any incident that would increase firefighter safety or visibility; for example: lost person searches, etc.

**HIGHWAY INCIDENT SAFETY**

**ATHENS-CLARKE COUNTY  
FIRE AND EMERGENCY SERVICES  
DEPARTMENT  
STANDARD OPERATING PROCEDURES  
VOLUME 1  
105.15  
PAGE 8 OF 8**

**TRAFFIC VESTS: ASSIGNMENT AND CARE**

- A. Each vest has been issued an identification number (example: 21A, R1A, etc). Fire personnel will use the identical numbered vest that corresponds to their assigned portable radio on each shift.
- B. Fire personnel will inspect their assigned vest each shift during or before truck checks to make certain that the vest is clean and not damaged.
- C. Vests should be cleaned using manufacturer's guidelines.
- D. Damaged or missing vests will be reported to the Station Officer.